

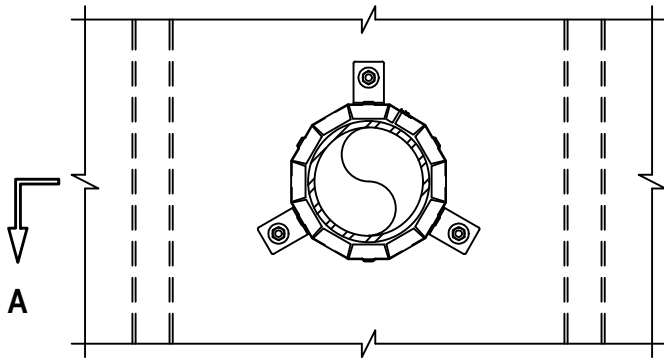
FIRESTOP CUSTOM DETAIL

PROJECT : 7252 RIVER PLACE, MISSION, BC

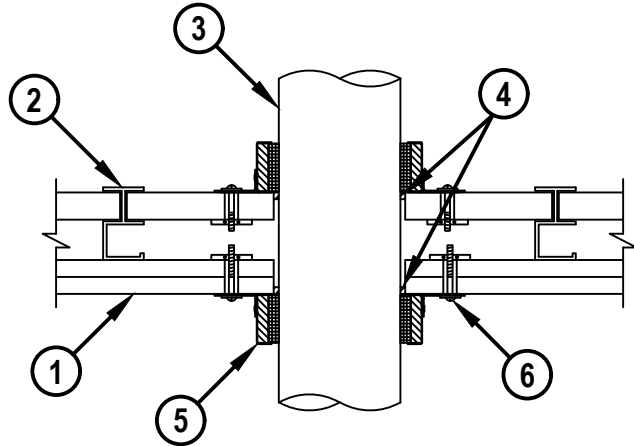
CONTRACTOR : WESTRIDGE MECHANICAL

F-RATING = 2-HR.

FRONT VIEW



SECTION A-A



1. GYPSUM SHAFT WALL ASSEMBLY (UL CLASSIFIED U400 SERIES) (2-HR. FIRE-RATING).
2. "C-T" SHAPED STUDS (1-5/8" WIDE x 2-1/2" DEEP, MIN. 25 GA.) SPACED MAXIMUM 24" C/C.
3. MAXIMUM 2" NOMINAL DIAMETER PVC PLASTIC PIPE (SCH 40) (CLOSED OR VENTED).
4. MINIMUM 1/4" DEPTH HILTI FS-ONE MAX INTUMESCENT FIRESTOP SEALANT.
5. HILTI CP 643N FIRESTOP COLLAR WITH FASTENING HOOKS (SEE TABLE BELOW) (SEE NOTE NO. 3 BELOW).
6. HILTI 3/16" TOGGLER BOLTS AND MINIMUM 3/4" DIAMETER WASHERS TO ATTACH EACH FASTENING HOOK TO GYPSUM WALL ASSEMBLY.

NOMINAL PIPE DIAMETER	PRODUCT DESCRIPTION	MAX. HOLE SIZE IN 1" GYPSUM LINER	MAX. HOLE SIZE IN GYPSUM BOARD
1-1/2"	CP 643 50/15" N	2-7/8"	2-1/8"
2"	CP 643 63/2" N	3-1/2"	2-5/8"

NOTES : 1. ANNULAR SPACE = MINIMUM 0", MAXIMUM 1/4".
 2. THIS SYSTEM IS DESIGNED BASED UPON CANADIAN TEST STANDARD CAN/ULC-S115-11 (2.5 Pa).
 3. FOR THE HILTI CP 643N INSTALLED WITHIN THE 1" GYPSUM LINER, ATTACH THE FASTENING HOOKS TO THE COLLAR BODY WITH NO. 7 SHEET METAL SCREWS MAXIMUM 5/16" IN LENGTH).

THIS FIRESTOP CUSTOM DETAIL REPRESENTS A FIRESTOP SYSTEM THAT WOULD BE EXPECTED TO PASS THE STATED RATINGS IF TESTED.
 (REFERENCE : UL SYSTEM NO. W-L-2217; cUL SYSTEM NO. W-L-2028)



HILTI, Inc.
 Plano, Texas USA (800) 879-8000

Designed by *Austin Mudd*

Sheet	1 of 1
Scale	9/64" = 1"
Date	Mar. 19, 2018

Drawing No.
288906c